

Schwank's Parasol series heaters are available in:

Portable Gas Outdoor Patio Heaters

These tall gas patio heaters are built on sturdy 4" wheels and can easily be moved from one location to another and can be moved to secure storage. The base of Schwank's parasol outdoor heater can hold up to a 20lb propane tank.

Fixed Mount Parasol Patio Heaters

Schwank's fixed mount parasol patio outdoor heaters are available in Natural Gas, piped in from your central fuel supply.

Experience Counts: Schwank is the worldwide market leader and most trusted brand with over 2 million heating appliances sold.



Portable LP

Fixed Mount NG



Features

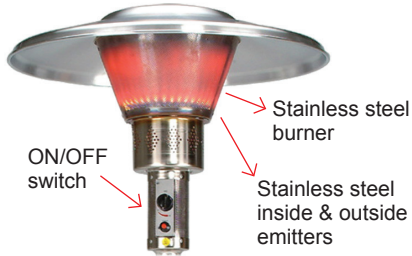
- Stainless steel enclosure to enhance the aesthetics of your patio
- Heat any area on your patio without needing an overhead structure
- Sturdy 4" wheels for stability and easy portability [portable model only]
- Portable propane or fixed mount natural gas models available

Contact us today for a FREE design and quote!

Parasol 4000 - Technical Specifications & Additional Resources

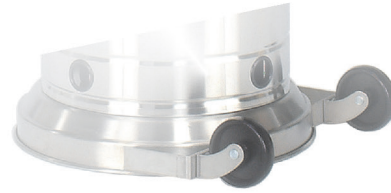
Information below is intended only as a reference and should not be used when installing equipment. Please ensure you locate the most recent instruction manual for accurate and up to date information.

Parasol 4000 - Fixed Mount Model



Standard

Parasol 4000 - Portable Model



- Sturdy 4" diameter wheels:
- Easy portability
 - Added stability

Dimensions and Specifications

| Portable: | FINISH | DIMENSIONS | INPUT BTU/HR | FUEL | GAS PRESSURE | | INLET | GAS SUPPLY | WEIGHT LBS. |
|--------------|-----------------|------------|--------------|------|--------------|---------|-------|---------------------------|-------------|
| | | | | | MIN | MAX | | | |
| 4005-CB | Stainless Steel | 90"x32" | 38,000 | LP | 11"w.c. | 14"w.c. | QCC | 20 lb. cylinder | 60 |
| Fixed Mount: | FINISH | DIMENSIONS | INPUT BTU/HR | FUEL | GAS PRESSURE | | INLET | GAS SUPPLY | WEIGHT LBS. |
| | | | | | MIN | MAX | | | |
| 4SN5-CB | Stainless Steel | 90"x32" | 38,000 | NG | 5"w.c. | 7"w.c. | 1/2" | Piped from central supply | 60 |

Parasol 4000 is design certified by CSA International for use outdoors in accordance with current ANSI standards.

Schwank warrants that the heater will operate as designed for wind conditions up to 10 MPH. Please note that adverse wind and weather conditions will reduce the effectiveness of any heating system.

Additional resources:



Instruction Manual
Portable Model



Instruction Manual
Fixed Mount Model



Patio Heater Catalog



Find a Distributor



Patio Heater Video

Distributor info:

Our customers include:



USA: 2 Schwank Way, Waynesboro, GA 30830 | Canada: 5285 Bradco Blvd. Mississauga, ON L4W 2A6
Tel: 1-877-446-3727 | Fax: 1-866-361-0523 | www.patioschwank.com | csr@schwankgroup.com



M111314 RL v1.7 RD: May-2019